



IN THIS ISSUE

- Presidents Report
- Group Reports
- Upcoming Events
- Around the Workshop
- Member's Projects
- Current Committee & Contacts



Scan QR code for socials

 [Facebook Page](#)

 [Facebook Group](#)

 [Website](#)

 [Social Links](#)

Postal Address:
 PO Box 897
 WODONGA 3690

The Cottage:
 Unit 4 48/54
 Gateway Village
 WODONGA VIC 3690
 Phone: 0494 092 684

Clubrooms:
 Wodonga Showground
 Wilson Street
 WODONGA VIC 3690

Presidents Report June 2024:-

There have been a few things happening around the workshop over the last couple of weeks. But firstly, a very big thank you to everyone you came and helped at the working bee, not forgetting the members who provided the eats for morning tea, it made the day thank you, it was a great turnout, the work was finished early with everything all set for the new dust extraction system to be installed on the 11th of June which is next week.



Since last month the Jet thicknesser has died and we have now replaced it with a new 402mm Sherwood thicknesser as well as a new 200mm Planer/jointer. There will be a full induction for all members on the how to use these new machines as there are several new ways of setting up on these machines.

With the new dust extractor and ducting as well as the two room air cleaners we would like to think that we should be almost dust free, thus providing a safer work area for all members.

We have been very fortunate to have several commissions coming through the club in which the club can make some extra revenue. There will be a call from the furniture group for some help in this area.

Martin Lawley

President

Group Reports to June 2024 Committee Meeting

Cottage Report:-

Things at the Cottage has slowed down a little at the moment more than likely due to the cooler weather and no family events (Mother's Day etc).

Thanks to all who have given their time to the opening of the Cottage, we have been open on all our business days which is great.

Welcome to Fiona S who is a new to the club and learning the fine art of Scroll sawing, she has also started to do some time in the Cottage, and we look forward to seeing some of her work displayed for sale.



Furniture Group:-

We haven't had many members through this last month, so a bit of maintenance has been carried out. I have made a start on a dining table for Libby Clarke, the legs are made with the mortises to be cut in and now we have a new thicknesser I can finish dressing the rest of the timber.

Luke has been busy with machining timber for his end table as well as some cutting boards things are taking shape there Luke.



We have been dressing some off cuts for the scroll saw and the pyrography groups which I hope we will be able to do more over the next few weeks.

So, until next month let's keep making saw dust.

Martin Lawley.

Timber Milling:-

No Report

Group Reports Cont.

Pen Making:-

The second batch of hybrid blanks went well with no leaks and will be ready to cut when the workshop reopens.

Some of these blanks will be used to make pens for sale in the cottage all proceeds to go to the club. I am looking volunteers to make some pens using these hybrid blanks.

Also if there is anything pen making related that you would like for a future workshop let me know.



Cheers, Paul

Workshop Report:-

As you read this the workshop has been stripped out and the old sheds and Units have been removed. A big thanks to those members who helped on Saturday 1st June with the clean-out, as well as those responsible for the morning tea of Cakes, Slices & Biscuits various, which were greatly appreciated by those in attendance.

The new unit will be installed starting on the 11th of June and should be up and running by the 17th. Again, many thanks to all willing workers.

17/6/24 Night: The installation of the dust extraction was completed at 5pm this evening and is now up and running. Training will be needed in its operation as there are a number of gates that will need to be left open at all times, if not the unit has the capacity to suck itself in and cause very expensive damage.

All group leaders will trained in its proper use as it is very different from the old one.

A new Thicknesser and Planner have also been installed- again some training will be required as they differ greatly from the old units. Everyone please come in have a look, ask questions and enjoy.

Martin Lawley

Saturday General workshop: -

Been very quiet lately mainly due to a lot of work in getting ready for the new equipment installation. Apologies to those members who use the workshop on Saturdays, but we hope that things will be much improved from now on.

Group Reports Cont.

Pyrography:-

We had a great turnout for Pyro last Saturday with eight of us in attendance plus there was a big turnout for the working bee, so it was a very busy morning at the club and an even bigger morning tea, thanks to everyone who brought in cakes and slices.

A big thanks to Kevin who has cut up some wood for the Pyros to use from his own tree, the pieces are very good and have live edges, they are greatly appreciated.

Happy Burning Heather



Woodturning Group: -

We have had a very good number of turners on our Wednesday nights with most lathes working. Welcome to Bob Shepherd a new member who joined us last week and came bearing gifts of a Ute load of Elm logs which should make some lovely bowls as well as other various items within the Club.

Pam & Chris A are learning the art of turning!!!!!!!, with a few things not quite going to plan and departing the Lathe. But they are still leaving us with a smile on their faces.



Jodie has completed a Mushroom shaped box & Faith her pair of grinders which was a Wedding gift for her brother, both were really fine results.

Chis V has joined Katie & Faith on the penmaking line, they are starting to use not only timber but a blend of Resin into their work. Marshall on the other hand continues to find the worst type of wood to turn but has had a good result with his recessed bowl which turned out every well.

Dan has completed his 2 round lamps which he started many months ago with a couple of changes of scenery in between (Queensland & Nepal). They were a real challenge with a very good result.

Group Reports Cont.

Carving: -

Carving continues with David back from overseas + Allison and a new male member.

I have yet to make contact with the Lady members from Yackandandah but intend to try and work something out with them (on the basis that attending in Wodonga as often as they can will achieve the greatest carving benefits for them).

Once I have wrapped that up I will get back to the Committee.

Best regards from the group.

Bob Cox

Scroll Saw:-

Although numbers have been small lately, we are still producing quite a lot of work.

We are also preparing for our Scroll Saw weekend in July, so far we have receiving a lot of interest from people, it looks like it could be a big event, we are working on menus and projects for the event and we are open to any suggestions.

Unfortunately, Ed hasn't been able to attend Scroll Sawing lately as he is taking time out to concentrate on his health, we wish him all the best and hope to see him back soon.

Heather

Box Making:-

Steady progress has been made by all.

A timely reminder that if anyone wishes to use the Gifkin Dovetail Jig and the associated router bits they are not to be used for any other purpose. These bits are made specifically for Gifkin Jigs and are quite expensive to replace.

Colin R



Working Bee—Dust Extractor Installation Prep



UPCOMING SCHEDULE

09

JULY

COMMITTEE MEETING @ 7PM

13

AUGUST

COMMITTEE MEETING @ 7PM

20

AUGUST

**PIZZA/GENERAL MEETING
STARTING @ 6PM**

10

SEPTEMBER

COMMITTEE MEETING @ 7PM

Around the Workshop:

- Bunning BBQ'S date are 20th July and 23rd November 2024. We will be calling on volunteers to help assist on the day.
- Thurgoona Men's Shed Expo on November 30th at Albury Showgrounds.
- Old 2 x Dust extraction units and Thicknesser have been sold to members for a total of \$885.00.
- Wodonga Senior week will be from 9am -4pm on 9th October 2024 – workshop will be open for the event.

Around the Workshop cont.

Checking all used or recycled timbers for nails

If anyone is going to use any recycled or old timbers and put them through any machines please run the Metal Detector over it first. The Detector is in the small draw unit beside the Woodwiz.

Used timber has put through the Thicknesser and there are a number of destroyed cutters which have had to be replaced.

Many thanks for your help



Hearing Protection around the workshop

If any members are using hearing protection devices (which we encourage) whilst in the Workshop,

DO NOT USE NOISE BLOCKING TYPES.

It is **very important** that you are able to hear any changes in the sounds that the machine that you are using changes. A change in sound usually means something is wrong!!!!!!!

****SAFETY GLASSES MUST BE WORN AT ALL TIMES IN THE WORKSHOP****

Your safety in the workshop is *not negotiable*.



WORKSHOP CLOSURES

Following a discussion with the Secretaries of the Wodonga Show Society and the Racing Wodonga, we will now remain open with the exception of Race days and any other events that will require the whole area to be closed, we will be advised in advance.

Racing Closure dates :

- Sunday 14th July
- Sunday 4th August
- Monday 9th September
- Saturday 19th October
- Friday 29th November

Dust Extractor—Installation



Dust Extractor—Finished!



18th Annual Scroll Saw Weekend

27th—28th July

What is a scroll saw?

A scroll saw is a small, specialized saw used primarily for intricate cutting and detailed woodworking. It features a fine, thin blade that moves up and down rapidly, allowing for precision cuts.

Whether you're creating a complex wooden puzzle, crafting delicate jewellery, or working on detailed model pieces, a scroll saw is an invaluable tool for achieving precision and artistry in woodworking.



What is the Scroll Saw Weekend?

A scroll saw weekend with other members is a fantastic opportunity to immerse yourself in woodworking, learn new skills, and connect with fellow enthusiasts. Scrollers travel annually to this event from far and wide including Murray Bridge SA, Sydney, Melbourne etc.

No experience is necessary. This is a perfect opportunity to learn and observe from experienced scrollers who are more than happy to share their knowledge and scrolling wisdom to anyone who wants to learn. Our scrollers provide a warm and friendly atmosphere where it is encouraged to ask questions, and share information with each other.

Timber and projects (with plans) are supplied for this weekend to all registered guests.

By the end of the scroll saw weekend, you'll have gained a wealth of knowledge, hands-on experience, and a deeper appreciation for the craft. You'll leave with completed projects, new skills, and connections with other passionate woodworkers.

Scroll Saw Vendors

One of the highlights of any scroll saw weekend is the fantastic array of vendors on hand. These vendors are more than just suppliers; they're an essential part of the experience, offering tools, materials, and expertise that can elevate your woodworking projects.

Slade Timber—offering timber stock milled specially for Scroll Saw projects.
<https://www.facebook.com/sladetimberau/>

The Scrollsaw Blade People—specialising in blades for scroll saws.

Applications for this event can be downloaded from here:

<https://awwinc.com.au/wp-content/uploads/2024/05/Scrollsaw-Weekend-Invite2024.pdf>

General Meeting



Member's Show and Tell

Fiona

(L) One of Fiona's first pyrography projects, she as one an amazing job and very talented.



From the Cottage

(R) new clocks in the cottage



Member's Show and Tell

Gerard Cresser

Just thought I'd share my latest project with you all 🤪

I've been recruited to help carve some of these amazing columns in the town library in Venice. What do you reckon?



Mark Hogan

(R) Double level earring stand.

Capacity for 112 earrings.

Made from Douglas Fir with shellac finish



Harry Dennis

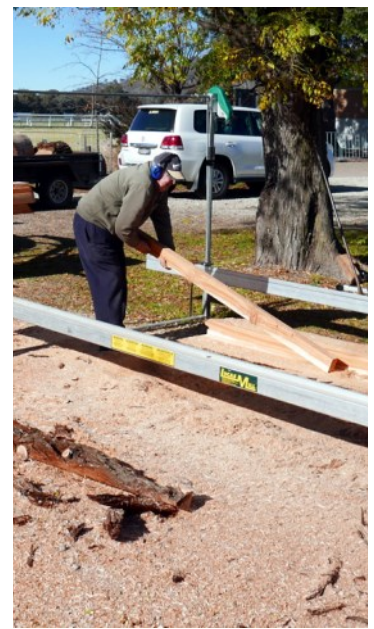
(L) Myrtle beech *Nothofagus cunninghami* ogre platter

Member's Show and Tell Cont.

Neil

Beechworth Redwood tree donated to the club by David from Local Tree Care services.

Transported to the workshop by Bevan and Sherryl and milled onsite by Dave and Bevan.



Member's Show and Tell Cont.

Dave Van Damme

(L) A conch shell, started off as a clay sculpt to reference it, the carved in camphor laurel, and mounted on a fallen gum tree from my yard. Shell was hand carved, sea floor power carved



(R) An owl sculpture. Head and feather from a single block of camphor laurel, but had to separate them unfortunately. Mounted on an old red gum fence post from my yard. Hand and powered carved





HELP US IMPROVE!

TELL US WHAT YOU THINK
ABOUT THE NEWSLETTER

We're always looking for ways to improve the newsletter and the information we send to you.

We'd appreciate your time to fill out a quick survey to let us know how we're going.

<https://forms.gle/djp15oevVWxFmFbBA>

WEEKLY WORKSHOP ACTIVITIES

DAY	TIME	ACTIVITY	NOTES
SATURDAY	9am - 12pm	PYROGRAPHY	Every Saturday morning at the Clubrooms.
SATURDAY	9am - 12pm	GENERAL WORKSHOP	Work on your own projects.
SATURDAY	1pm - 4pm	GENERAL WORKSHOP	Work on your own projects.
MONDAY	9am - 12pm	FURNITURE & GENERAL WORKSHOP	Work on your furniture project in our modern and well equipped workshop.
TUESDAY	9am - 12pm	General WORKSHOP	Work on your own projects.
1st and 3rd TUESDAY	8:30am - 12pm	TIMBER MILLING	Located at the Club in the Wodonga showgrounds. except on HOT DAYS (35°+).
VARYING TUESDAY'S	6pm (Pizza) for 7pm (Meeting)	GENERAL MEETINGS (Dates advised in Newsletters, Email & on club Website)	Come along to a general meeting of your club. Pizza nights Prior to meetings Visitors are welcome to attend. Raffle, Show & Tell.
WEDNESDAY	2pm - 5pm	CARVING GROUP	Come and learn how to hand carve.
WEDNESDAY	8am - 12pm	SCROLL SAW WORKSHOP	Come and learn how to Scroll saw.
WEDNESDAY	1pm - 8pm	GENERAL WORKSHOP	All welcome to come and join in and work on your own projects.
WEDNESDAY	3pm - 8:15pm	WOODTURNING	Learn the art of Woodturning. Clean up time starts 8.15pm Sharp. Clubroom door is locked at 8.30pm.
THURSDAY	9am - 12pm	PEN MAKING	Learn how to turn a fine handcrafted Pen.
FRIDAY	9am - 12pm	BOX MAKING	Come and learn how to make a finely crafted Box.

ALL TIMES ARE SUBJECT TO CHANGE BASED ON GROUP LEADERS AVAILABILITY

Club Shirts, Caps and Logos.

These items used to be obtainable at J&M Clothing who have sold their business to B-Cut located at 176 High St Wodonga on corner of Sesame St.
They now have all the designs that J & M used to have.

Subsequently if any members require any of these items they can be ordered directly through B-Cut

ALL MOD STEEL BUILDINGS

Your Locally Owned Ranbuild and Centenary Authorised Dealer

All Mod Steel Buildings
21 Reid Street,
WODONGA VIC 3690

Phone: (02) 6024 3333
Fax: (02) 6024 4777
Mobile1: 0404 475 001
Mobile2: 0448 077 355
email: ranbuilidalbury@bigpond.com
Web Site: www.spanmaster.com.au

Centenary
PATIOS CARPORTS VERANDAHs

BLUESCOPE STEEL

Colorbond



**World quality
Australian made
Vicmarc lathes,
chucks and accessories**

CARROLL'S WOODCRAFT SUPPLIES

Woodcut

Robert Forby
SHEFFIELD ENGLAND

vicmarc
WOODTURNING LATHES CHUCKS AND ACCESSORIES

TORMEK
Sharpening Innovation

PROXXON WOODFAST

*Your one stop shop for all
your woodcraft supplies*
www.cwsonline.com.au

Unit 2, 10-14 Capital Drive
Grovedale Victoria 3216
Phone 03 5243 0522
Fax 03 5243 2088
jim@cwsonline.com.au

Executive Committee Members 2023-24

President	Martin Lawley	0412 385 184	martinlawley@optusnet.com.au
Vice President	Gerard Cresser	0428 561 855	cresser@bigpond.com
Past President	Ivan Leishman	0409 451 989	leishmanivan@gmail.com
Secretary	Lex Manning	0418 627 911	manningjanelex@gmail.com
Treasurer	Mark Vaughan	0455 339 033	mark@partserve.com.au
Committee Member	Warren Kaye	0414 982 213	wkaye48@gmail.com
Committee Member	Kim Young	0403 126 816	kimandhaydon@gmail.com
Committee Member	Heather Clutterbuck	0429 811 276	crhodes@bigpond.net.au
Cottage Manager	Rob Casey	0415 236 979	caseytrm@optusnet.com.au
Workshop Manager	Dan Clancy	0408 830 870	dagmargibb@bigpond.com
Newsletter Editor	Katie Hardman	0428 598 191	news@awwinc.com.au
Public Officer	Lex Manning	0418 627 911	manningjanelex@gmail.com
Safety Officer	Gerard Cresser	0428 561 855	cresser@bigpond.com
Welfare Officer	Cheryl Seymour	0417 697 506	polly.481@bigpond.com

Woodworking Group Co-ordinators

GROUP	NAME	TIME/S	PHONE	EMAIL
Box Making	Col Rhodes	Friday 9am to 12 noon	0418 691 997	crhodes@bigpond.net.au
Carving	Bob Cox	Wednesday 11.00 am to 1.30 pm	0408 700 660	bobmolly6@gmail.com
On Call	Ivan Leishman	Any time workshop not open	0409 451 989 Ring to open	leishmanivan@gmail.com
Timber Milling	Ross Graham	1st & 3 Rd Tuesdays 9 AM to 12 Noon	0427 237 531	rwgraham12@bigpind.com
Pen Turning	Paul Kohl	Thursday 9 AM to 12 Noon	0419 555 357	---
Pyrography	Heather & Esther	Saturday 9am to 12 noon	0458208638	crodes@bigpond.net.au
Scroll Sawing	Ed Kilo	Wednesday 8-30 AM to 12 Noon	02 6024 2482	---
Wood Turning	Harry Dennis	Wednesday 3 PM to 8-30 PM	0428 578 859	dennispastoral@bigpond.com
Furniture Group	Martin Lawley	Monday 9.30 AM to 1.00 PM	0412 385 184	martinlawley@optusnet.com.au

**The workshop can be opened outside of group specific times
as long as there are two members on site at all times.**

For the possible opening or an extension of time for the clubrooms workshop outside of normal hours.
Call: 0408 830 870 (Dan Clancy) or 0409 451 989 (Ivan Leishman) for more Information.