



IN THIS ISSUE

- Presidents Report
- Group Reports
- Upcoming Events
- Around the Workshop
- Member's Projects
- Current Committee & Contacts



Scan QR code for socials

 [Facebook Page](#)

 [Facebook Group](#)

 [Website](#)

 [Social Links](#)

Postal Address:
 PO Box 897
 WODONGA 3690

The Cottage:
 Unit 4 48/54
 Gateway Village
 WODONGA VIC 3690
 Phone: 0494 092 684

Clubrooms:
 Wodonga Showground
 Wilson Street
 WODONGA VIC 3690

Presidents Report May 2024:-

Hello everyone and welcome to the month of May, we are now only a month away from the installation of our new dust extraction system. There will be a working bee for the removal of the old system and the sheds.

Lex, our secretary, will be sending out an email later with all the information of what is happening. One of the worst things that could happen in a woodworking shop is to have the Thicknesser out of action, which has happened, but we do have a backup one and hopefully it will be back up and running this week.



Thanks to the members who have been resawing timber and dressing it up for the scroll sawyers and the box making group. This is a great way to help the other members in our club to be able to carry out their pursuits in woodwork as well as cleaning up a lot of timber that wouldn't necessarily be used other than left for rubbish bin.

Unfortunately, the news on the thicknesser is not good in fact, after the work of Ross making a new idle/tensioner pulley, it is terminal. We now will need to replace this machine, so in the meantime we aren't without a thicknesser as we do have one now set up as a temporary machine.

Martin Lawley

President

Group Reports to May 2024 Committee Meeting

Cottage Report:-

The Cottage has had a very good month with our sales well up. Thanks to all who have assisted in staffing during this month. There are a few gaps in the roster book over the next few weeks – if you have a spare 3 hours the club would be glad if you are able to help in keeping the doors open.

There has been a good number of sales of items that members have donated which really helps the bottom line, assisting with the purchase of new equipment in the workshop. Thank-you to all.

Lex



Furniture Group:-

We have been fortunate to receive a commission to make a fly-fishing rod rack for Bluey's Hunting and Fishing Store. It will be a club project, so anyone who is interested in taking part in this project we will be commencing in about 2 weeks as we need to sort out some timber and I need to finalize the plans and construction method. We will need to make some jigs for lamination work for certain items to be used in the making of the rack.

Our numbers have been down over the last few weeks but all the same some good work has been happening. A dining table for Libby Clark has started with the dressing of timber for the top as well as the apron frame and legs, it is an extension table. Luke has been preparing timber for some cutting boards and some for his guitar storage racks, good work Luke.

Until next month let's keep making saw dust.

Martin Lawley.



Group Reports Cont.

Pen Making:-

Hi all,

It's been a steady month, the highlight was the hybrid pen blank casting workshop. Eight people attended and some nice blanks were made. I will get some pictures of the finished pens for the newsletter as soon as I can.

If you have any suggestions for the next workshop, please let tell me and I will organize it.



Cheers Paul

Workshop Report:-

G'day Everyone,

A fair bit of maintenance has been done this month with a few problems raising their heads. The Vicmarc lathe is out of action until a new stop switch/block is obtained and fitted. The combination thicknesser/planer has worn-out and parts are unable to be obtained due to its age. A replacement is in a Grant Application than should be announced in mid-May, if successful the club will get a new one through that avenue, if not a replacement planner will have to be bought.

Changes to the RCD switching has been made effecting 6 power points in the workshop which have the biggest lathes attached to them, due to power blackouts caused by the Variable speed setup on the lathes, which cause fluctuations in the power flow. Please take note of the signs that are above the power points effected.

Lex (Filling in for Dan)

Saturday General workshop: -

No Report

Group Reports Cont.

Pyrography:-

Everyone has been working on different things this month from new projects to just revamping old ones that have faded over time.

We are pleased to welcome Fiona into our group, she has progressed very well in such a short time and is producing great flower work, we look forward to seeing it completed.

Happy Burning

Heather



Timber Milling:-

A couple of good milling days saw us cut up several Camphor Laurel and iron bark logs as well as sorting through some smaller stuff. A few enquiries are starting to come in again for slabs and timber so hopefully some of those will turn into sales.

A big thanks to Les, the owner and manufacturer of the Wood wiz who assisted us with some repairs to our machine, he kindly loaned me a couple of specialist tools along with some technical advice making quick work of the job.

Ross



Woodturning Group: -

No Report

Group Reports Cont.

Carving: -

At the moment things are pretty quiet for CARVING. David is away for a month and likewise Natalie with young Darcy.

Although the girls from Yackandandah initially indicated that Wednesday pm would be okay, it seems that it is problematical. and I may have to rework something with them. For now, you will continue to see me there on Wednesdays, with hopefully - some of the newer members.

Regards,

Bob Cox

Scroll Saw:-

We have had a good attendance this week, 6 saws working. A search is on for projects for our scroll weekend in July any idea please let us know. Many thanks to Colin for helping some of our group with their projects. Ed.

Kim and I travelled to Wangaratta on the 4th & 5th May for their scroll saw weekend. A great turnout and catchup with old friends and meeting new ones. We exchanged ideas for our upcoming weekend and a few good ideas were gained. All in all a great time was had with lots of food eaten and lots of laughs.

Heather.

Box Making:-

Another steady month with several nice boxes completed.

Our future projects will include the use of dove tail joinery, which will broaden the range and creativity of design.

It is pleasing to have a wider range of timber now available for our beginners.

Colin R



Northeast Woodies Gathering At Shepparton

On Saturday, the 13th of April, three members from our club went to Shepparton for the Northeast Woodies Gathering held at the clubrooms of the Goulburn Valley Woodworkers. Who were the hosts for this gathering.

Woodworking clubs came from Benalla, Alexandria & Eildon, Wangaratta as well as us, Albury Wodonga Woodcrafters. I was a little disappointed in our effort to support this event. Many thanks to Cheryl and Bevan Seymour for their attendance, as turned out it was a great day with many laughs as well as much networking and information exchanging.

The day started off with registration followed by morning tea, very nice it was with scones with jam and cream and freshly made sandwiches. The next item was a welcome address from Chris the president of the Goulburn Valley Woodworkers, that was followed by demonstration on bending of wood for a ukulele with several different methods that can be used.

Screw It Screws were there and demonstrated the square drive screws as well as their style of Kreig screw jig, with a full range of their stock. The next part of the morning session was the Presidents' reports with each of the clubs' giving a run down on the position and where we are all at with numbers etc. We do have the largest number of members. There were tours of their workshop and sales of timber that were on display as well as the obligatory raffle in which Cheryl won a minor prize, I also won a lucky dip prize (3 boxes of brass screws). Next was the most important part of the day Lunch, a very nice bar b que lunch and salads.

The first session, after lunch was show and tell with many fine pieces on display, we had several pieces in the show and tell, Cheryl and Bevan brought 6 pieces and I brought a treasure box, which created quite a bit of interest in how it was made and the timber used. Bevan's 7,000-year red gum vase had a lot of admirers as well as Cheryl's car and caravan. There were several segmented bowls and one unusual pot, it was 450 mm high and 250mm in diameter, I think Cheryl may have a photo of it.

The afternoon finished with the baton being passed onto Wangaratta for next year, this subject to their committee agreeing to host the gathering if not we will take up the baton. The number that attended was 60 people.

Martin Lawley

President Albury Wodonga Woodcrafters

UPCOMING SCHEDULE

11

JUNE

COMMITTEE MEETING

18

JUNE

**GENERAL MEETING - SUPPER
ST JOHNS TRAINING - DEFIB**

09

JULY

COMMITTEE MEETING

13

AUGUST

COMMITTEE MEETING

Around the Workshop:

- Bunning BBQ'S date are 20th July and 23rd November 2024. We will be calling on volunteers to help assist on the day.
- Thurgoona Men's Shed Expo on November 30th at Albury Showgrounds.
- Order sandpaper for machines as the Sand Paperman is closing and discounts are being offered.
- The club will purchase a new Thicknesser if we are not successful with the Veterans Affairs Grant application to a value up to \$4,500.00

Around the Workshop cont.

Checking all used or recycled timbers for nails

If anyone is going to use any recycled or old timbers and put them through any machines please run the Metal Detector over it first. The Detector is in the small draw unit beside the Woodwiz.

Used timber has put through the Thicknesser and there are a number of destroyed cutters which have had to be replaced.

Many thanks for your help



Working Bee—1st June

Reminder that we are having a little get together to strip out the workshop on Saturday 1st June starting at 8.30am.

All able-bodied persons are invited to attend.

We are going to put out all the old ducting and sheds attached to the workshop ready for the installation of the new Dust Extraction Unit. If all goes well and enough people, we should be finished by lunch time.

Hearing Protection around the workshop

If any members are using hearing protection devices (which we encourage) whilst in the Workshop,

DO NOT USE NOISE BLOCKING TYPES.

It is **very important** that you are able to hear any changes in the sounds that the machine that you are using changes. A change in sound usually means something is wrong!!!!!!!



****SAFETY GLASSES MUST BE WORN AT ALL TIMES IN THE WORKSHOP****

Your safety in the workshop is ***not negotiable***.

Around the Workshop Cont.

WORKSHOP CLOSURES

Following a discussion with the Secretaries of the Wodonga Show Society and the Racing Wodonga, we will now remain open with the exception of Race days and any other events that will require the whole area to be closed, we will be advised in advance.

Racing Closure dates :

- Saturday 29th June
- Sunday 14th July
- Sunday 4th August
- Monday 9th September
- Saturday 19th October
- Friday 29th November

Resin Hybrid Workshop

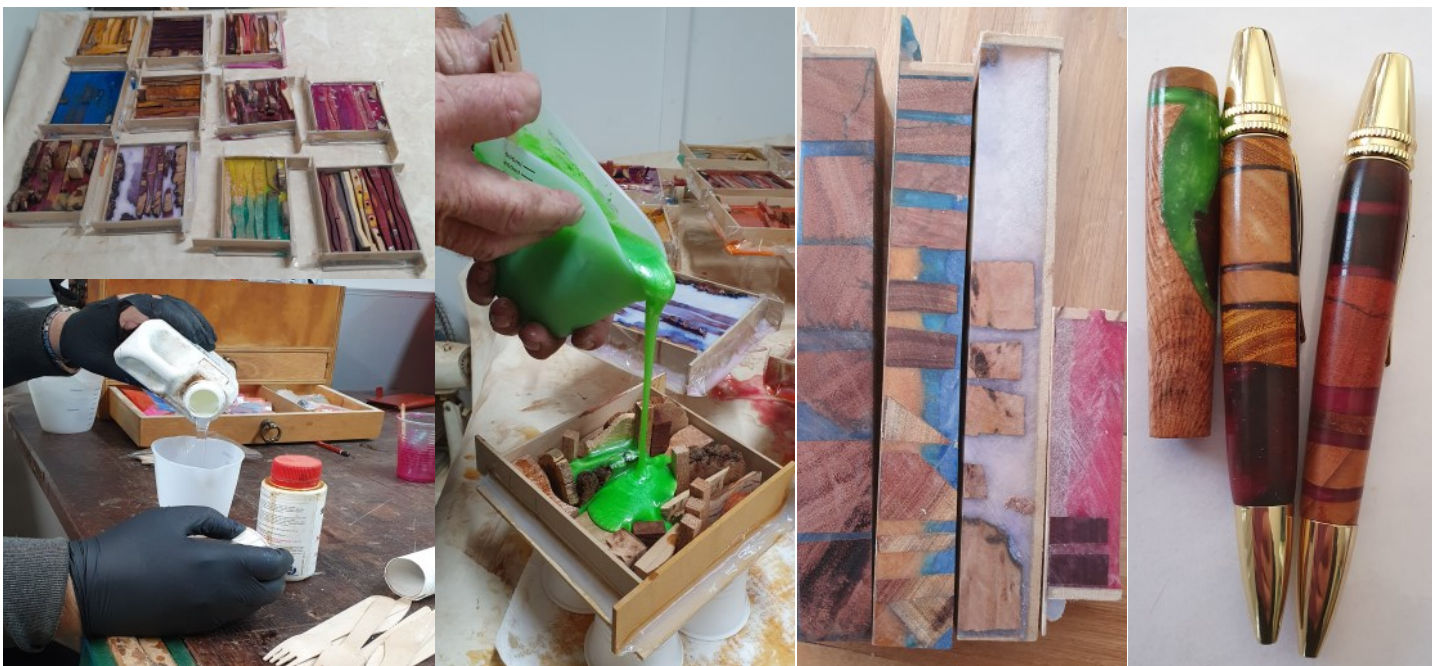
Our recent workshop welcomed 7 club members and 1 visitor, creating a wonderful opportunity for collaboration and learning. Everyone actively participating and gaining hands-on experience.

The resin mixing session was a success, resulting in a variety of beautiful colours. However, we encountered an unexpected challenge: the resin consumption was higher than anticipated, and some moulds were not fully filled due to resin seeping through tiny gaps.

We addressed this issue collectively and discussed strategies for improving mould construction. As a result, we have ordered more resin to complete the unfinished and under-filled moulds. Additionally, we will be creating new moulds to test our improved methods for preventing leaks.

Our next resin pour will be scheduled for a Saturday afternoon, with the exact date to be announced. As you turn your blanks into pens, we encourage you to share photos of your finished pieces in the newsletter.

Cheers, Paul



18th Annual Scroll Saw Weekend

27th—28th July

What is a scroll saw?

A scroll saw is a small, specialized saw used primarily for intricate cutting and detailed woodworking. It features a fine, thin blade that moves up and down rapidly, allowing for precision cuts.

Whether you're creating a complex wooden puzzle, crafting delicate jewellery, or working on detailed model pieces, a scroll saw is an invaluable tool for achieving precision and artistry in woodworking.



What is the Scroll Saw Weekend?

A scroll saw weekend with other members is a fantastic opportunity to immerse yourself in woodworking, learn new skills, and connect with fellow enthusiasts. Scrollers travel annually to this event from far and wide including Murray Bridge SA, Sydney, Melbourne etc.

No experience is necessary. This is a perfect opportunity to learn and observe from experienced scrollers who are more than happy to share their knowledge and scrolling wisdom to anyone who wants to learn. Our scrollers provide a warm and friendly atmosphere where it is encouraged to ask questions, and share information with each other.

Timber and projects (with plans) are supplied for this weekend to all registered guests.

By the end of the scroll saw weekend, you'll have gained a wealth of knowledge, hands-on experience, and a deeper appreciation for the craft. You'll leave with completed projects, new skills, and connections with other passionate woodworkers.

Scroll Saw Vendors

One of the highlights of any scroll saw weekend is the fantastic array of vendors on hand. These vendors are more than just suppliers; they're an essential part of the experience, offering tools, materials, and expertise that can elevate your woodworking projects.

Slade Timber—offering timber stock milled specially for Scroll Saw projects.
<https://www.facebook.com/sladetimberau/>

The Scrollsaw Blade People—specialising in blades for scroll saws.

Applications for this event can be downloaded from here:

<https://awwinc.com.au/wp-content/uploads/2024/05/Scrollsaw-Weekend-Invite2024.pdf>

Member's Show and Tell

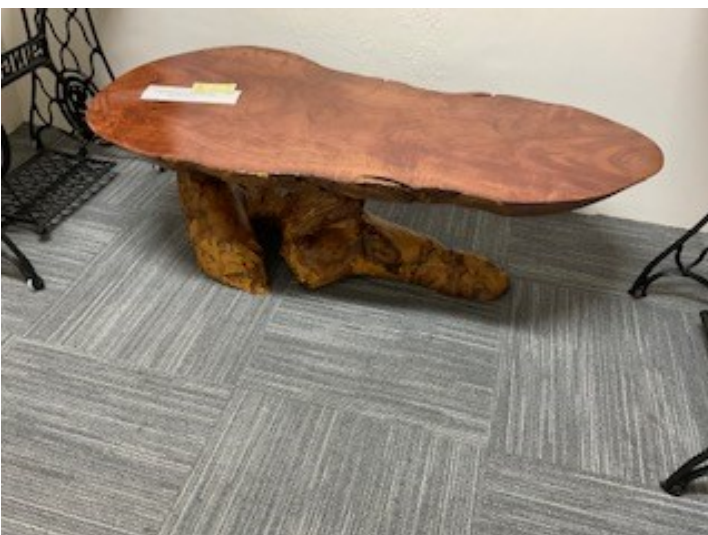
Faith Tabaluja

Salt and pepper mills made as a wedding gift.



Bevan Seymour

(L) Red box coffee table (R) Sewing machine table.



Member's Show and Tell Cont.

Kris van Duursen

Large serving platter turned from elm



Marshall van Duursen

Two bowls turned from Red Elm with Natural accents.



Member's Show and Tell Cont.

Wearing Brooches: And telling their stories Exhibition

Jutta Vyner currently has some pieces included in this exhibition at Albury Library Museum.

Absolutely amazing to see the recognition of our members in our local community.

MAKING BROOCHES A NATURAL PROGRESSION



Growing up in Germany both my grandmother and mothers always seemed to wear brooches.

I have inherited some of them. When I came to Australia my husband was at a loss as to what kind of jewellery to give me because I don't wear earrings etc.. so he started giving me brooches too.

We both enjoy woodworking, he was a turner, liked to hand carve and often helped me preparing my wood. I do mostly scrollsaw work and carve with a rotary tool. We both have won at craft fairs.

Making brooches was a natural progression. I didn't like that so many brooches were tiny (I'm a big person) so I started making my own.

I love magpies (they actually come when I whistle) , so I had to make a couple of them.



IT'S ALL ABOUT HAVING FUN & EXPERIMENTING



Usually I was inspired by other people. One day it was a woman walking her dog and she told me she used to resuce pelicans. That inspired a couple of pelican brooches.

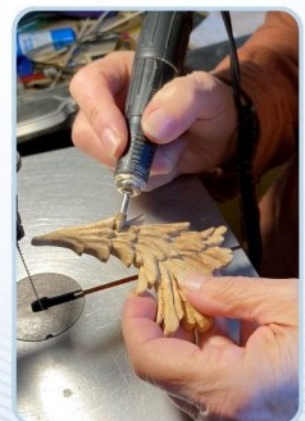
For Easter I wanted something Australian and made a bilby. It's always things I like.... (I like a LOT of things! :)

Sometimes I see things on line and get inspired. It's all about having fun, experimenting, and yes, sometimes I do go overboard and mess things up. Usually that just gives me inspiration and new ideas.

I store all my wooden brooches in a big box with pull out trays I made with the scroll saw and carved with a Dremel, shaping each compartment to suit a specific brooch.

When I can't do woodworking I do other crafts. I can't sit and watch tv without having something in my hands. Needlework, Origami... I'll give anything a go. It's great to always have little things to give away.

Jutta, Wodonga



Member's Show and Tell Cont.

If you haven't already, make sure you get down to take a look at this exhibit. Wednesday 10 April - Sunday 25 August 2024

For more information, please visit

<https://www.alburycity.nsw.gov.au/whats-on/museum/wearing-brooches-and-telling-their-stories-exhibition>



Trish

(R) This is a box made by Trish at box making.
The timber is silky oak with a shellac finish



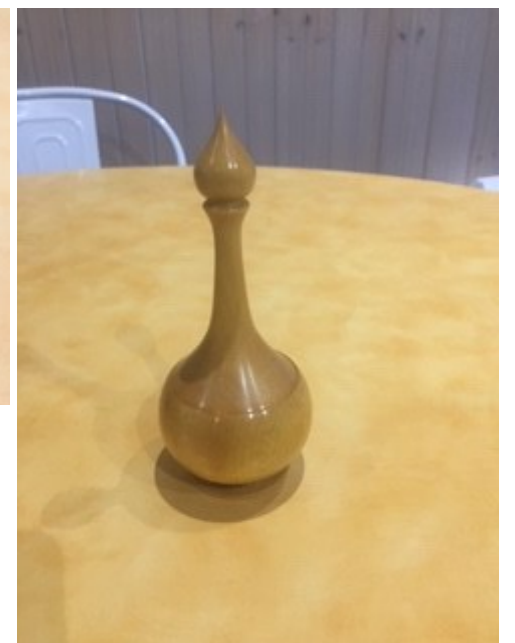
Member's Show and Tell Cont.

Harry Dennis @ The Wandering Termites

Lathe setup



(L - R) Lathe setup ; Box New World Mahogany Box Apple Gum



(L - R) Box Jamaican dogwood; Minaritchie box; Onion top box Amarilo



HELP US IMPROVE!

TELL US WHAT YOU THINK
ABOUT THE NEWSLETTER

We're always looking for ways to improve the newsletter and the information we send to you.

We'd appreciate your time to fill out a quick survey to let us know how we're going.

<https://forms.gle/djp15oevVWxFmFbBA>

WEEKLY WORKSHOP ACTIVITIES

DAY	TIME	ACTIVITY	NOTES
SATURDAY	9am - 12pm	PYROGRAPHY	Every Saturday morning at the Clubrooms.
SATURDAY	9am - 12pm	GENERAL WORKSHOP	Work on your own projects.
SATURDAY	1pm - 4pm	GENERAL WORKSHOP	Work on your own projects.
MONDAY	9am - 12pm	FURNITURE & GENERAL WORKSHOP	Work on your furniture project in our modern and well equipped workshop.
TUESDAY	9am - 12pm	General WORKSHOP	Work on your own projects.
1st and 3rd TUESDAY	8:30am - 12pm	TIMBER MILLING	Located at the Club in the Wodonga showgrounds. except on HOT DAYS (35°+).
VARYING TUESDAY'S	6pm (Pizza) for 7pm (Meeting)	GENERAL MEETINGS (Dates advised in Newsletters, Email & on club Website)	Come along to a general meeting of your club. Pizza nights Prior to meetings Visitors are welcome to attend. Raffle, Show & Tell.
WEDNESDAY	2pm - 5pm	CARVING GROUP	Come and learn how to hand carve.
WEDNESDAY	8am - 12pm	SCROLL SAW WORKSHOP	Come and learn how to Scroll saw.
WEDNESDAY	1pm - 8pm	GENERAL WORKSHOP	All welcome to come and join in and work on your own projects.
WEDNESDAY	3pm - 8:15pm	WOODTURNING	Learn the art of Woodturning. Clean up time starts 8.15pm Sharp. Clubroom door is locked at 8.30pm.
THURSDAY	9am - 12pm	PEN MAKING	Learn how to turn a fine handcrafted Pen.
FRIDAY	9am - 12pm	BOX MAKING	Come and learn how to make a finely crafted Box.

ALL TIMES ARE SUBJECT TO CHANGE BASED ON GROUP LEADERS AVAILABILITY

Club Shirts, Caps and Logos.

These items used to be obtainable at J&M Clothing who have sold their business to B-Cut located at 176 High St Wodonga on corner of Sesame St. They now have all the designs that J & M used to have.

Subsequently if any members require any of these items they can be ordered directly through B-Cut

ALL MOD STEEL BUILDINGS

Your Locally Owned Ranbuild and Centenary Authorised Dealer

All Mod Steel Buildings
 21 Reid Street,
 WODONGA VIC 3690

Phone: (02) 6024 3333
 Fax: (02) 6024 4777
 Mobile1: 0404 475 001
 Mobile2: 0448 077 355
 email: ranbuilidalbury@bigpond.com
 Web Site: www.spanmaster.com.au

Centenary
 PATIOS CARPORTS VERANDAHs

BLUESCOPE STEEL

Colorbond



**World quality
Australian made
Vicmarc lathes,
chucks and accessories**

CARROLL'S WOODCRAFT SUPPLIES

Woodcut

Robert Forby
SHEFFIELD ENGLAND

vicmarc
WOODTURNING LATHES CHUCKS AND ACCESSORIES

TORMEK
Sharpening Innovation

PROXXON WOODFAST

*Your one stop shop for all
your woodcraft supplies*
www.cwsonline.com.au

Unit 2, 10-14 Capital Drive
Grovedale Victoria 3216
Phone 03 5243 0522
Fax 03 5243 2088
jim@cwsonline.com.au

Executive Committee Members 2023-24

President	Martin Lawley	0412 385 184	martinlawley@optusnet.com.au
Vice President	Gerard Cresser	0428 561 855	cresser@bigpond.com
Past President	Ivan Leishman	0409 451 989	leishmanivan@gmail.com
Secretary	Lex Manning	0418 627 911	manningjanelex@gmail.com
Treasurer	Mark Vaughan	0455 339 033	mark@partserve.com.au
Committee Member	Warren Kaye	0414 982 213	wkaye48@gmail.com
Committee Member	Kim Young	0403 126 816	kimandhaydon@gmail.com
Committee Member	Heather Clutterbuck	0429 811 276	crhodes@bigpond.net.au
Cottage Manager	Vacant		
Workshop Manager	Dan Clancy	0408 830 870	dagmargibb@bigpond.com
Newsletter Editor	Katie Hardman	0428 598 191	news@awwinc.com.au
Public Officer	Lex Manning	0418 627 911	manningjanelex@gmail.com
Safety Officer	Gerard Cresser	0428 561 855	cresser@bigpond.com
Welfare Officer	Cheryl Seymour	0417 697 506	polly.481@bigpond.com

Woodworking Group Co-ordinators

GROUP	NAME	TIME/S	PHONE	EMAIL
Box Making	Col Rhodes	Friday 9am to 12 noon	0418 691 997	crhodes@bigpond.net.au
Carving	Bob Cox	Wednesday 11.00 am to 1.30 pm	0408 700 660	bobmolly6@gmail.com
On Call	Ivan Leishman	Any time workshop not open	0409 451 989 Ring to open	leishmanivan@gmail.com
Timber Milling	Ross Graham	1st & 3 Rd Tuesdays 9 AM to 12 Noon	0427 237 531	rwgraham12@bigpind.com
Pen Turning	Paul Kohl	Thursday 9 AM to 12 Noon	0419 555 357	---
Pyrography	Heather & Esther	Saturday 9am to 12 noon	0458208638	crodes@bigpond.net.au
Scroll Sawing	Ed Kilo	Wednesday 8-30 AM to 12 Noon	02 6024 2482	---
Wood Turning	Harry Dennis	Wednesday 3 PM to 8-30 PM	0428 578 859	dennispastoral@bigpond.com
Furniture Group	Martin Lawley	Monday 9.30 AM to 1.00 PM	0412 385 184	martinlawley@optusnet.com.au

**The workshop can be opened outside of group specific times
as long as there are two members on site at all times.**

For the possible opening or an extension of time for the clubrooms workshop outside of normal hours.
Call: 0408 830 870 (Dan Clancy) or 0409 451 989 (Ivan Leishman) for more Information.