

**The Official Newsletter of the SHIRE WOODWORKING CLUB Inc.** Reg. No. Y2889524  
"The WORKSHOP", 2B Turriell Bay Road, Lilli Pilli. NSW. 2229  
Workshop Phone 0490 861 606 Membership Enquiries: (02) 9522 7674 Newsletter Editor: Phone 0414 538 475

### **Christmas Toy Delivery to The Family Co**

The Family Co is a Shire based charity whose purpose is:

*Creating safe and positive communities where women, children, youth and families can build capacity to take on life's challenges and realise their best futures.*



The above photo shows the toys set aside for The Family Co awaiting collection. For further news about the soft toys shown above please see page 10.



Lola Hearn from The Family Co, flanked by Graham Ethell & Barry Gardner from the Club.

**CLUB COMMITTEE:**

**President:** Ian Rudd  
**Vice President:** Malcolm Armstrong  
**Secretary:** Graham Ethell  
 Telephone 9522 7674  
**Treasurer:** Alan Ritchie  
**Committee Members:** Roger Dixon, David Edwards  
 Maurice Smith

**SUB-COMMITTEES & Auxiliary Positions**

**Assistant Secretary:** Roger Dixon  
**Assistant Treasurer:** Roger Walsh  
**Project Sub-Committee:** Gary Healey, Roger Walsh & Ray Tregoning.  
**Librarian:** Roger Walsh  
**Safety Officers:** David Edwards, Gary Healey, Axel Tennie & Bob Quigley,  
**Welfare Officer:** Malcolm Armstrong  
**First Aid Officers:** Graham Ethell, Alan Ritchie & Gary Healey  
**Newsletter Editor:** Maurice Smith  
**Catering Officers:** Richard Cain, Steve Lansley, Trevor Lewis, Neil Mathews, Lynn Messenger, Ray Tregoning, Axel Tennie & Roger Walsh  
**Equipment & Training :** Roger Dixon, David Edwards, Neil Mathews, Kevin Gowen, Gary Healey, Maurice Smith, Ray Tregoning & James Windschuttle  
**Raffles:** Peter Mott  
**Exhibitions Sub-Committee:** Graham Ethell & Steve Lansley  
**Property Sub-Committee:** Graham Ethell & Alan Ritchie  
**Toymaking:** Malcolm Armstrong, Barry Gardner, Steve Lansley, Neil Mathews, Glen Reeve, Reno Scriberras & Maurice Smith.,  
**Facebook:** Alan Ritchie  
**Webmaster:** Maurice Smith  
**Woodcarvers' Liaison:**

**Librarian's report**

We have received the latest (Winter 2023) issue of the *Fine WoodWorking Tools and Shops* magazine. Another great issue but with particular mention of the Woodpeckers page on all sorts of useful shop tools.

Another good explanation of the *Shaper Origin*, a handheld router that brings digital creativity and precision to the workshop. I will try to get a representative to visit us for a demonstration.

Take a look and learn from the article titled 'Build a Better Crosscut Sled'. It has a great explanation, drawings and pictures. We all need one for our home workshops.

The magazine is now in the Gallery magazine rack. Happy Woodworking. Roger Walsh – Club Librarian



**MAXIDAY:  
 SATURDAY 10 DECEMBER  
 AGENDA**

8:45am	Open Lilli Pilli Workshop
9:00am	Monthly Meeting
9:30am	Video — Ian's selection
10:00am	Morning Tea
10:30am	Show & Tell
11:30am	Setting up for lunch
12:00noon	X'Mas Lunch – We are promised a veritable feast. This will be good training for the many feasts to follow over the coming festive season
1:30pm	Raffle Draw
1:45pm	Members projects
3.00pm	Workshop Close

**Presidents report December 2022**

The workshop has seen several changes in recent weeks that improved our layout and are the result of concerted efforts to make the workshop a safer place. There are now clearly marked areas around our fire extinguishers and the floor area that provides free access to the main switch board. Please refrain from storing anything in these designated areas. There is now a dedicated woodworker's bench installed in the workshop that has two vises and plenty of drawer and storage space underneath.

Also, the office area has been cleared out and a dedicated sharpening bench installed that now houses the Robert Sorby Pro Edge sharpening system, the 200 mm dia Bench Grinder and the Record Slow Speed Wet grinding machine. All the various sharpening stones and accessories are stored in the bench drawers. The installation of a dedicated LED overhead light and new power points complete the new arrangement. The improvements were carried out by Ray Tregoning and Bob Quigley, to who our thanks for their work.

In the past few months, we have accepted several new members, this has resulted with more members in the workshop. Toy making days have been very well attended and the result is more items being available for hospital deliveries or for Gallery sales.

We have had several good opportunities to raise funds at our recent stalls at Bunnings and the Cook Classic Carnival held at Cronulla. These events have gone a long way to replicate what we used to experience with the Gynea Village Fair. Thank you for all members who have been able to dedicate their time to man our stalls. The club is fortunate to have the

*(Continued on page 9)*

# Safety Update

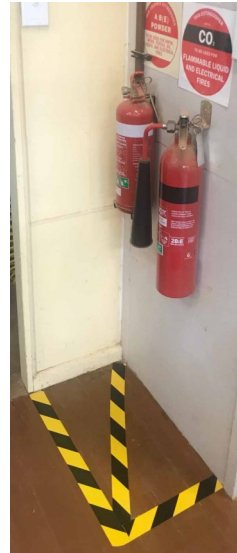
The Safety Committee has been busy, and in line with the Club's determination to lower the risk level they have achieved the following:

- Purchased several *WET FLOOR* signs (see the photo below)
- Fire extinguisher points- floors now have black & yellow tape for equipment exclusions (see second photo below)
- Cleared the space in the former office so allow clear access to the electrical switchboard and marked the floor below the switchboard for equipment exclusions.



So, what's exciting about a *Wet Floor* sign?

Nothing really. But it helps reduce a risk to members. Any member who has been to the club during heavy rain knows that the entrance floor does get wet, at times, very wet. The sign alerts us to the fact that extra care is needed when moving across that section of the floor.



The exclusion zone markings are in several locations to ensure that no items of any kind are placed on the floor that might obstruct access to the fire extinguishers or to the electrical panel.

Any member placing "stuff" in those locations will be counselled about the meaning of those floor markings.

## November MaxiDay presentation about LuciClear

Scott Giddings was our guest speaker for the November Maxi Day. Scott gave us an informative and detailed presentation on the use and application of LuciClear casting resin. His talk drew much interest from members, evidenced by many questions where Scott was never 'stumped' as he responded with full explanations.



His experience in using LuciClear resins shone through! He emphasised more than once in his talk that ambient conditions were critical to producing a perfect result with good surface appearance without air bubbles! Many coloured pigments are available for those wishing to add a creative flare to their project. We were all impressed with his very clear instructions on LuciClear's use. In particular his live demonstration of mixing and pouring

the clear resin onto a small wooden board was an excellent demonstration. The web site <https://www.luciclear.com.au/> has all the information needed if you wish to find technical details.

Our President Ian Rudd presented Scott with a suitably engraved platter as a thank you for such a great presentation. Thank you again Scott!

# Participation in recent external events

During and subsequent to the several Covid lockdowns in recent years which resulted in the cancellation of numerous external events in which the Club usually participated. We have in the last few months participated in numerous external events and as a result the Club's exposure and coffers have improved. Below are photos of the events in which the Club has participated.

## Cook Classic Carnival

Sunday 20 November saw the Club attend the Cook Classic Carnival at Cronulla Beach. It was quite a successful day, a great fund raiser with sales just shy of the best result ever since we first participated in this event in 2014, despite there being two other woodworking Clubs present this year.

We also received a great deal of interest in the Club generally. The weather was fine, but extremely windy. One photo shows Bob and Ray valiantly trying (and ultimately being successful) in preventing the tent ending up in New Zealand.



We had quite a few very well known visitors to our stand. The above photos show two of the visitors. In case you are wondering, the fellow in the white t-shirt in the left hand photo is a visitor. While in the right hand photo, the fellow with red hair is the visitor. Do you recognise either of the visitors?

The Club also acknowledges the support for Community organisations from our Federal member Scott Morrison and his staff for the Cook events over many years and appreciate the opportunity for the Club to participate in these fund raising events, free of charge.

See the report on the following page about the Cook Community Raffle.

## Bunnings Sales Events

In early November and early December the Club had a small sales stall in the entrance foyer of Bunnings store at Taren Point.



Pictured below are members Ray Tregoning and Steve Lansley at the sales desk. We took the opportunity to promote the Club generally as well as the Gallery sales operation.

The sales data for these events is not yet to hand but we believe that the attendance was a worth while effort.

There will be at least one more such event in the coming week, this time at night. It will be interesting to see how this night time exposure compares to Saturdays' exposure.

We really appreciate the opportunity to participate and extend out thanks to our local Bunnings store.

# Participation in Cook Community Classic Raffle

Each year the Club, along with many other community groups in the Cook Federal electorate, participate in the Cook Community Classic raffle. The great feature of this raffle is that the various community groups that sell the raffle tickets get to keep the money so raised.

For the 2022 raffle the funds raised by Club members is the third best result ever, just shy of the second best in 2016 by \$40. In total 53 Club members participated in the fund raising. We thank those members for their efforts and to the usual suspects who did the necessary behind the scenes work to account for the raffle books, income and other paperwork.

And not to forget we thank the Federal member for the Cook electorate (Hon Scott Morrison) and his hard-working staff for arranging the Cook Community Classic raffle.

## A personal story of a prize winner in the Cook Community Classic Raffle

Your editor here, in his personal capacity, with this report. In the 2021 Cook Community Classic Raffle I was fortunate to win 2nd prize in the raffle. This was the first time in my life that I have ever won any prize of significance in a raffle.

The prize that I won was a 2 night stay for 2 people in resort called Byron at Byron. The prize was valued at \$2,000. I can report that my wife and I recently stayed at the resort taking this prize and that the resort is beautiful, the staff friendly, the food delicious and the rooms spacious.

If you want to indulge yourself, this resort has a lot going for it.

Thanks to the organisers of the Cook Community Classic for arranging this prize.

## Some Hospital News

### Painting of a toy recently delivered



Members, you may recognise this toy. It was one of a batch recently delivered to Randwick Children's Hospital.

Just in case you don't recognise what it is, it's a laser cut rocket ship.

The rocket ship was painted by one of the young patients and the photo was supplied to the Club.

### Next delivery to the hospital

The next delivery to the Randwick Children's Hospital will take place on 7th December when Barry Gardner and a team from the Club will deliver the final batch of items for 2022.

Among the items to be delivered will include items similar to the items shown on the photo below.



Thank you from our local State member of Parliament, Mark Speakman, as recorded in NSW Hansard



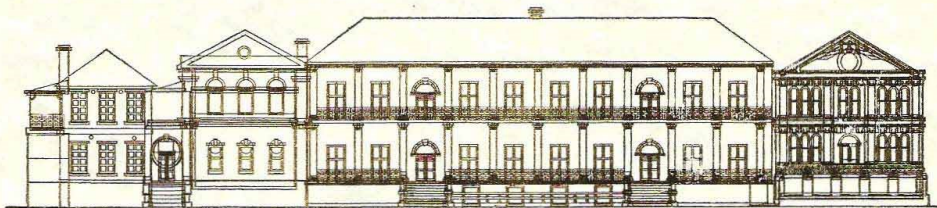
## SHIRE WOODWORKING CLUB

I commend the members of the Shire Woodworking Club who handcrafted 430 wooden toys and 11 crocheted rugs for the Randwick Children's Hospital this October. Over several months, members crafted Halloween themed toys such as fairy houses, Halloween cut-outs, tugboats, planes, guitars, and 23 room name plaques. The Club even made a green screen stage for the children to perform puppet videos which are broadcast across the hospital wards by 'Captain Starlight.' The club's next delivery will be at Christmas which they hope will bring joy and excitement for children at the Hospital. I want to acknowledge not only the club's donation of toys to Randwick Children's Hospital, but also their dedication to supporting a range of community causes over many years. I recognise among others the following recently re-elected executive committee members for their contribution to the club and local community: president Ian Rudd, vice-president Malcolm Armstrong, treasurer Alan Ritchie, secretary Graham Ethell, and ordinary members Roger Dixon, David Edwards, and Maurice Smith.

A handwritten signature in cursive script, reading 'Mark Speakman'.

Mark Speakman  
MP for Cronulla  
Attorney General

*Extract from the NSW Legislative Assembly Hansard on 16 November 2022*



## Barry Gardner reports on cutting 3D figures on the bandsaw

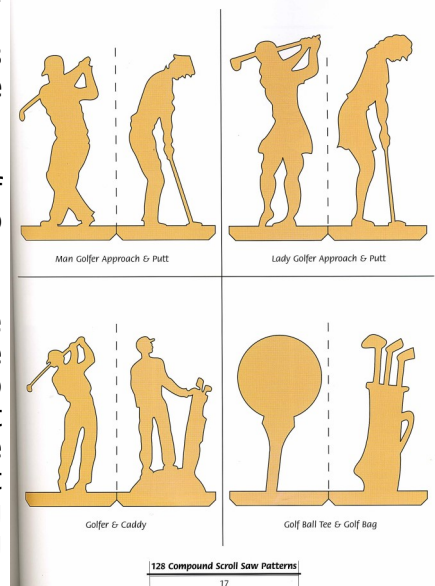


For some years now, at irregular times, I have cut compound patterns on the scroll saw. These were mainly in the form of a pattern as seen in the photo at right. However each image is limited to the depth of cut of one's scroll saw. In my case that's about 45mm.

Recently the Club invested in a Carter Band Saw Guide System for our Laguna Band saw. This has enabled making of larger sized compound (3D) pieces. As seen in the photo above. One is only limited to the wood size available and provided the image does not have internal cuts.

I have found the wood needed is best fine grained, with the Hemlock wood in the Club's store being ideal. Each of the items in the above photo took between 15 and 30 minutes to cut out. The important thing is to print the pattern size to fit the piece of wood and to cut the least complicated side of the pattern first and ensure you keep your offcuts. This is so that you can restore them with clear packing tape before starting cuts on the other side. Remember the item you are cutting out is in fact internal and not seen until all cutting is finished. If you want to have a go please let me know I have a number of Christmas patterns ready to cut.

*Barry Gardner*



## Seen in a recent on-line auction. Maybe of interest!!!

Barry Gardner, reports:

Lawsons Auctioneers in November 2022 auctioned off the house contents of a home at Ashfield. Obviously the owner was a woodworker as there were a number of woodworking related Lots. The items in the photos at right show a selection of those Lots including the final bid price. The auction closed on 16 November.

Remember that one has to add a buyers premium of 25% to the final bid price to determine the cost paid for each item.

Can one rely on an auctioneers price estimates?

*Barry Gardner*

*Editor here:* Maybe I should take up making timber saw horses. The price per item is amazing.



### Lot 256, Bidding Closed

A timber display of wood working tools including chisels, hammers etc.

Estimate: \$600 - \$800

Current Top Bid : \$1200 has been bid - Sign in

[More Info](#)

[Wish List \[+\]](#)



### Lot 255, Bidding Closed

An Ulmia industrial work bench, Height 84cm x Width 250cm x Depth 87cm

Estimate: \$1,000 - \$1,500

Current Top Bid : \$1700 has been bid - Sign in

[More Info](#)

[Wish List \[+\]](#)



### Lot 260, Bidding Closed

A Gifkins Dovetail Jig. Length 40cm

Estimate: \$200 - \$300

Current Top Bid : \$500 has been bid - Sign in

[More Info](#)

[Wish List \[+\]](#)



### Lot 247, Bidding Closed

A pair of timber saw horses. Height 87cm

Estimate: \$40 - \$60

Current Top Bid : \$70 has been bid - Sign in

[More Info](#)

[Wish List \[+\]](#)



### Lot 249, Bidding Closed

A Carba 14"bandsaw with instruction manual. Height 167cm

Estimate: \$150 - \$250

Current Top Bid : \$425 has been bid - Sign in

[More Info](#)

[Wish List \[+\]](#)



# Plank Competition entry report

## Maurice Smith—container ship fleet

Maurice reports: I decided to make a fleet of container ships. First, I looked at images of container ships in Google images, then I made a cardboard model to get an idea of the amount of timber that would be needed for each ship. See photo #1.



After making this model, I wasn't happy with the proportions, so I fiddled with the model until I was happy with it. From there I then prepared an Excel file to calculate the timber usage. From that I calculated that I had enough timber to make 3 container ships if I cut the timber from 19mm thick to 9 mm thick.

Fortunately, the Hammer bandsaw allowed me to do this readily.



The photo to the left shows the finished fleet of 3 ships. All the items on the deck can be lifted off and moved around. The containers have open tops to allow children to place small items in them. The containers and the bridge sit on rails to keep them properly aligned.

The curvature of the front of the hulls gave me some challenges, in the end I used kerf cutting techniques to enable me to bend the timber. Then the nose of the ship took a lot of trial and error to get to fit correctly.

The appearance of the bridge windows was achieved by laser engraving some white acrylic and leaving the white backing paper on and then gluing the windows to the timber.



The third photo shows one of the ships in profile. I used the laser to engrave the name of several nearby surfing beaches on each side of the ship as well as on the stern.

Two of the ships were included in a recent delivery to Randwick Children's Hospital and one is in the Gallery for sale.

I really enjoyed making these ships and I also learned kerf cutting techniques and form bending.

## President's Report (cont'd from page 2)

number of enthusiastic volunteers.

Please remember that safety starts with you. Always do a dry run when using machinery and if in doubt ask for assistance. Please clean down machines after use and always remember to use the large or small brooms. If you are using the Domino machine, please be aware of possible trip hazards with the attached electrical leads and vacuum hose.

Best wishes for the Festive Season to all members and thank you for your contribution to the Shire Woodworking club.

Happy Woodworking

Ian Rudd President

# Miscellania

## **A huge vote of thanks to Barbara Taafe for her dedication and knitting skills**

The Club's great friend Barbara Taaffe, has been very busy again this year, knitting this wonderful display of 59 knitted dolls, animals and puppets etc. It's been over 10 years since Barbara commenced donating these via the Club to the organisations the Club supports at Christmas.

All these items were included in the donations to The Family Co on Tuesday this week, (see separate article). The Club sincerely thanks Barbara for all this beautiful work, we are sure there will be many children who are subject to family violence or deprivation who will have something to smile about this Christmas.



## **Workshop's Newly Installed Sharpening Bench**

Ah, the joy of using scarily sharp and accurate chisels, planes and other cutting tools. Sharp tools make woodworking life so much easier, just keep your fingers clear. This bench is now operational and brings all the Club's sharpening equipment into one easy-to-use location.

For further details, inspect the setup in the workshop.



# SHOW & TELL

## Neil Matthews make several cutting boards

I recently cut up some hardwood from my woodshed to make some cutting boards. I made these boards thinner than normal as the thicker boards could be a problem for ageing hands to handle. I don't really know what timber I've used but I believe the red timber in the cutting board is Merbau. I also made a serving board (or is it a tennis racket) and a pizza board.

I realised that a pizza board really needs a pizza cutter to get full use. I had a piece of 2.0mm stainless steel and used a 20-litre paint tin as a curve template. This was cut with an angle grinder and finished off on my linisher. I cut a slot in a hardwood handle on my saw bench using a 2.5mm blade and finished the handle the same as the boards with mineral oil and bees' wax.

Naturally, the cutter was going to fall out of the handle so I figured 5-minute Araldite was the answer. I devised a method to get the epoxy into the bottom of the slot without making a mess of the finished handle. I mixed the Araldite on a small ziplock plastic bag. I then folded the bag in half and fed it in from the end of the slot to the centre. I then used a Stanley knife blade to cut the plastic bag and used a 1mm shim to hold the bag against the edge of the slot while pulling it out. Result epoxy in the bottom of the slot and no mess. The blade was then inserted and 5 minutes later, job done.

*Editor here: No, Neil hasn't a broken shoulder, it was a temporary problem.*



## Graham Ethell and Resin Boards

I brought these boards along to illustrate a few ideas of what you can make with the resin products so interestingly displayed by Scott and Dave.

These were made by my brother in Tasmania using the LuciClear products. He now spends most of his woodworking time making trays, coffee tables, river tables, etc, using these products. He's a member of the Derwent Valley Men's Shed.

*Editor here: the items displayed by Graham are a great illustration of what you can achieve with casting resin.*



# SAFETY







**SAFETY FIRST: Members are asked on all club days to bring along and use their personal safety gear. ie. hearing protection, dust mask, eye protection, ensure they are wearing good sturdy protective footwear and no loose fitting clothes.**

### Club Calendar

December 2022							12
S	M	T	W	Th	F	Sa	
				1	2	3	
4	5	6	7	8	9	10	
11	12	13	14	15	16	17	
18	19	20	21	22	23	24	
PH	PH	PH	28	29	30	31	

January 2023							1
S	M	T	W	Th	F	Sa	
PH	PH	3	4	5	6	7	
8	9	10	11	12	13	14	
15	16	17	18	19	20	21	
22	23	24	25	PH	27	28	
29	30	31					

### Legend:

	Committee meeting 12.30 pm
	Club Days—members own projects
	Toy Making—No own projects
	Club Day and Woodcarvers evening
	MaxiDays
	First Saturday is Woodcarvers use of the Workshop

### New member #378



New member Simon Pike admitted last month, however, no photo was to hand when the November newsletter was compiled.

### Total Donations to date for 2022

We have donated **977** items so far in 2022 and there is one further delivery to go. Another fabulous year for the members.

### 2022 Excellence Awards

Entries to the 2022 Excellence Awards will be judged at the January 2023 MaxiDay.

Ok members, you are invited to submit completed projects to be judged in the 2022 Excellence Awards.

The categories in which entries are judged are:

- Overall
- Art
- Collectible
- Furniture
- Utility

### Welcome to our new members

Please join me in welcoming the following new members to our wonderful club. We look forward to working with you.

Member #379: Wanda Moura

Member # 380: Rachel Low

Your editor is waiting for an opportunity to take a photo of Wanda and Rachel.

### Toy donation to The Family Co

The Club's annual donation to this worthy organisation occurred on 6 December.

In total, 113 items were provided, including the 59 hand puppets, etc, shown on page 10.

### Members with Birthdays in December

Day	Member
6	Alan Hendry
9	Gary Mitchell
10	Robert Quigley
12	Kevin Gowen
16	Gary Halder
16	Jan Westerhof
25	Stan Kirkman
27	Michael Green

Hope every one of you have a wonderful birthday and lots more of them.



Printed as a community service at the office of

*The Hon.* **Scott Morrison MP**

Federal Member for Cook

[www.scottmorrisonmp.com.au](http://www.scottmorrisonmp.com.au)