



# The Wonthaggi Woody

ISSUE

206

April

2024

[www.wonthaggiwoodcrafters.com.au](http://www.wonthaggiwoodcrafters.com.au)


Wonthaggi Woodcrafters  
P. O. Box 477 Wonthaggi 3995  
Jean Melzer Centre  
239 White Road  
Wonthaggi 3995

## COMMITTEE:

### PRESIDENT:

Neil Lenne - 0417 343112

### VICE PRESIDENT:

Lex Van Saane - 0417 010 941

### SECRETARY:

Alan Hurst - 0427 393 234

### TREASURER:

Frank Kisvarda - 0418 177505

## COMMITTEE MEMBERS:

Stephen Edge - 0404 252 470

Syd Gordon - 0434 614 573

Tina Kalivas - 0425 701 629

Peter Myers - 0413 122 103

Amanda Robbins - 0423 054 756

Hartley Tobin - 0400 359 976

## General Email

[wonthaggiwoodcrafters@gmail.com](mailto:wonthaggiwoodcrafters@gmail.com)

## Website

[www.wonthaggiwoodcrafters.com.au](http://www.wonthaggiwoodcrafters.com.au)

## Facebook

[www.facebook.com/wonthaggiwoodcrafters](http://www.facebook.com/wonthaggiwoodcrafters)

## Secretary

[woodiessec@gmail.com](mailto:woodiessec@gmail.com)

## Newsletter

[woodiesnews@gmail.com](mailto:woodiesnews@gmail.com)

## DIARY 2024

April 24th - Working bee for preparing container

April 30th - Final day for payment of fees

May 1st - Painting working bee

May 6th - Committee Meeting

May 13th - Members' Meeting

May 26th - Bunnings Sausage sizzle

June 3rd - Committee Meeting

June 10th - Members' Meeting

July 1st - Committee Meeting

July 8th - Members' Meeting

## WOODIES WORKSHOP SESSIONS

### WOODTURNING: Regular Sessions

Monday 9 am to 12 noon	- Hartley Tobin:	5997 6328
	Neil Lenne:	5678 5736
	Neil Bateman:	5672 3229
Monday 1pm to 4pm	John DiStefano:	0482 173 799
Monday 5 pm to 8 pm	- Michael Bladen:	0428 270 850
Wednesday 1pm to 4pm	- Lionel Wood:	0409 695 950
Friday 9 am to 12 noon	- Hartley Tobin:	5997 6328
	Neil Lenne:	5678 5736
	Neil Bateman:	5672 3229

### SEGMENTED TURNING: Regular Sessions

Friday 9am to 12 noon	- Grant Crocker	0418 121 592
-----------------------	-----------------	--------------

### WOODTURNING: On-demand Sessions

Friday 1pm to 4pm	Hartley Tobin:	5997 6328
-------------------	----------------	-----------

### TOY GROUP: Regular Sessions

Tuesday 9am to 4pm	- Peter Myers	0413 122 103
--------------------	---------------	--------------

### PYROGRAPHY: Regular Sessions

Friday 1pm to 4 pm	- Michael Bladen:	0428 270 850
--------------------	-------------------	--------------

### SCROLL SAWING: Regular Sessions

Wednesday 9 m to 12 noon	- Lionel Wood:	0490 695 950
--------------------------	----------------	--------------

### BANDSAW BOX MAKING: On-demand Sessions

Monday 1pm to 4 pm	- Marion Kerry:	0409 010 843
--------------------	-----------------	--------------

### JOINERY: Regular Sessions

Thursday 9am to 12 noon	- Syd Gordon	0434 614 573
-------------------------	--------------	--------------

### JOINERY: On-demand Sessions

Thursday 1pm to 4pm	- Syd Gordon	0434 614 573
Wednesday 1pm to 4pm	- Syd Gordon	0434 614 573

### CARVING: Regular Sessions

Friday 9am to 12 noon	- Harry Smith:	5674 8078
	Lionel Wood:	0490 695 950

## PRESIDENT'S MESSAGE



Hi all and welcome to the April newsletter.

We had our Easter shop recently and it was a great success. Thank you to all the people that put in items for sale and those who were on duty over the time that the shop was open.

We had the April members meeting on Monday the 8th and I was a little bit disappointed with the turnout. We went to a lot of trouble to get interesting speakers

for the meeting and it was a bit embarrassing that there was such a small crowd. However, I believe the members who did attend found it very interesting to find out about all the safety equipment and measures that are available to them. The show and tell was really great and we had a lot of items from members. David Macdonald brought along two different didgeridoos he'd made and played them. It was a great show and a haunting sound.

We have quite a few members still on the sick list and wish them good health and hope to see them soon.

As everyone is aware we had another accident with the table saw, I like to wish Syd a speedy recovery and hope to see him back at the club very soon. Just a reminder to everyone that the doors on all the work shops will be locked during tea breaks and then reopened when it is over.

*Cont. Page 2*

I would like to thank all of members who helped at the Bunnings BBQ on the 7th as it was a great success, topping up our income for future endeavours. Just a reminder that annual fees are over due, so please pay them asap. if you don't pay them our policy (and insurance) will not allow you to use Club facilities or receive Club correspondence including Newsletters. Cheers, **Neil**



## CURRENT NEWS

**Easter Shop** - Thanks to all the members who assisted with the Easter Shop. We cleared about \$2500 and the Club made \$550 commission including toy sales.

**Shipping container** - Thanks to Bendigo Bank for \$1000 and Bunnings assisting with paint, we are having working bees to prepare the container for shelving and transferring timber and other items to reduce clutter in our storage areas and workshops.

**New Workshop proposal** - The planning is well underway. We now have professionally drawn plans and the next stage is to get engineering advice and then building approval. We already have both BCAL and BCSC permission. Attached to the south side of the current machinery shed, it will allow for more space to better cater especially for toy, carving, joinery & segmented turning groups. We then need to apply for a Grant later in the year to go forward.

**Bunnings Sausage Sizzles** - The next sausage sizzle roster for Sunday 26th May is on the noticeboard. The BBQ conducted on 6th April cleared \$1132.

**Bunnings Easter Family Night** - Conducted on Thursday March 21st. Neil, Alan & Amanda attended and whilst there were only a few sales, over 450 people went through & there was interest in our display.

**Members' Meetings** - Nick Leitch will be the speaker at our May Members' Meeting. Nick, a Woodies member, is a physiotherapist at Allied Health just down the road from the Club. He'll speak about proper lifting and manual handling techniques, as well as physiotherapy in general. Have your questions ready!

**Current Grant applications** - An application has been submitted for a Fed. Govt. Men's Shed Grant to run a Level 1 First Aid Course for 20 members. If successful, the course will be conducted by BCAL over two days, each day for catering for 10 participants. It will be a full day course with lunch provided and there will be zero cost for participants.

An application has also been submitted for a BCSC Community Grant to replace our only lathe that isn't electronically speed controlled. We'll cross our fingers for that one too. No grants are certainties.

## CURRENT NEWS cont.

**Annual Membership Fees were due on 31st March** - There are a few members who have indicated they will not be renewing. However those who have yet to pay, have until 30th April, after which time their membership will lapse and the Club's facilities will be unavailable for use due to insurance requirements.

**Emergency contacts** - Thanks to those who have returned their Emergency Contact details. We'd appreciate it if these could all be emailed to [woodiessec@gmail.com](mailto:woodiessec@gmail.com) asap.

**Our toys at the Market** - Tina Kalivas has been selling our wooden toys successfully for us at her stall in the Wonthaggi Market, opposite the old Bunnings site. Thanks Tina for your support. If you haven't visited this market, call in and have a look around.



***There's plenty of opinions on what are the most important safety rules to ALWAYS put in place when woodworking. Here's some essential ones ....***

1. Use personal protective equipment (PPE).
2. Wear the right clothing and footwear, nothing loose and hair tied back.
3. Avoid distractions and keep your mind fully focused on the task at hand.
4. Continual learning is essential.
5. Ask for help when you need it.
6. Maintain a clean and tidy workshop and clear any possible trip hazards.
7. Keep your blades and bits and chisels sharp.
8. Before starting, check wood for metal and flaws.
9. Using a single extension cord – not power boards.
10. Use push sticks to keep hands and fingers safely away from cutters.
11. Avoid using/taking anything that may impair your reaction time and judgement.
12. Keep a comprehensive First Aid kit handy.
13. Don't do anything you know is wrong or you think is risky - don't take a chance on shortcuts.
14. Don't stand directly behind stock being cut, planed, turned or jointed to avoid injury from kick-back, or pieces flying off.

## MEMBER PROFILE

On the 22nd March 2014, The Wonthaggi Woodcrafters Inc. celebrated their 25th Anniversary with a luncheon at the clubrooms. Invited guests included inaugural members, life members and local State Member of Parliament, Ken Smith. Seventy members, partners, guests and friends joined in celebrating what began as a small gathering of like-minded people at the Wonthaggi South Recreation Club rooms to what is now a very active Club with 60 male and female members, who are proud to meet, socialise and work in some of the best woodcrafting club facilities in Victoria.



***And guess who was our newsletter member profile for that month 10 years - HARTLEY TOBIN. So a blast from the past, here 'tis .....***



I was born in Essendon in 1936. My father was a clerk with the Victorian Railways and we shifted around a bit. With the start of the Second World War 1939, my father enlisted and with mum and my two brothers, I moved to Wonthaggi where my mother had grown up and my grandparents lived. I started primary school at Bilson Street

and have vivid memories of what Wonthaggi was like in those days when The Mine was the life blood of the community.

In 1944 my father returned from the war and took up the position of Night Station Master at Warragul. I completed my primary and secondary education at Warragul and then qualified as a primary teacher at Burwood Teachers College (now Burwood Campus of Deakin University).

While at Teachers College I was able get more involved in my two favorite sports, athletics and baseball. I was boarding close to the facilities of the Collingwood Harriers Athletic Club and the Collingwood Baseball Club so, obviously, they were the clubs I joined. In baseball I reached A Grade level before baseball was changed from a winter sport to a summer sport and the Collingwood Baseball Club, along with a number of others closed, or became combined with another club. In Athletics, I represented Collingwood at A Grade level in all the jumping events, the throwing events (except for the hammer throw) and the

hurdles. Occasionally I would fill in (not very well) one leg of a relay. For twenty years I competed in the Veteran Athletics winning numerous medals at state level and in 1987, in the Australian Veteran Athletic Championships (50-55 age group), I won the Bronze Medal for the Triple Jump and the Gold Medal for the Pole Vault.

In 1962 I married Meryl Brown and we moved in to our partially completed house in Bayswater. Our three children, Michael, Michele and Derek, were born while we lived there. As a teacher I took promotion whenever possible as well as completing a Science degree part-time (majoring in Botany and Zoology). Another of my interests is travelling Australia, especially the more remote areas. Together, with Meryl, (and our children when they were young) we have made trips covering much of Australia. Our combined interests in Australian flora and fauna, scenery, history and indigenous culture means we always find something of interest and also realize there is still more of Australia to cover.

In 1996, because of my interest in Australian native plants, the Australian Horticultural Judges Association approached me to draw up a completely new set of guidelines for their section on Australian Flora. Prior to this, Australian Flora had been forced to fit into the criteria set by the Royal Horticultural Society for the other flora of the world. It just didn't work.

In 1972 we purchased a block of land at Coronet Bay and built a holiday house which gave us the opportunity to relax away from the hustle and bustle of metropolitan life. We loved the area so much that we thought how great it would be to live in the area permanently (at least in retirement) and in 1979 we purchased the land where we are currently living. In 1983, after 21 years in Bayswater, we shifted here as I had secured the Principal's position at Bass Valley Primary School, a position I held until I took early retirement in August, 1991.

After 35+ years being involved with large numbers of people (children, teachers, parents and the public in general), I felt I would enjoy being a semi-hermit, enjoying my native plants and tinkering with my new interest --- woodturning. At high school I had done woodwork in Years 7 and 9 and, although there were woodturning lathes in the workshop, we were not allowed to use them. They were reserved for students doing the 'trade' courses. I would have to wait another 40+ years.

In March, 1992, Harry Oates introduced me to the Wonthaggi Woodcrafters. At that stage the Club had about 11 or 12 members and held a monthly meeting.

I am thankful especially to George Hill, Okke Huitema and Giulio Marcolongo, whose encouragement in my early years with the Club helped get me to where I am today. I enjoy the friendships I have made and the Club's fantastic working/learning facility and social atmosphere.

Apart from our three children, Meryl and I currently have seven grandchildren and three and a half great grandchildren.



## SHOW & TELL



**Left:** From Hartley Tobin - this is the first piece he ever turned - good practice for all the skills. AND although it's warped, he's kept it all these years for posterity.

**Below:** This lovely small lidded and segmented container is made from Redgum and Pine.

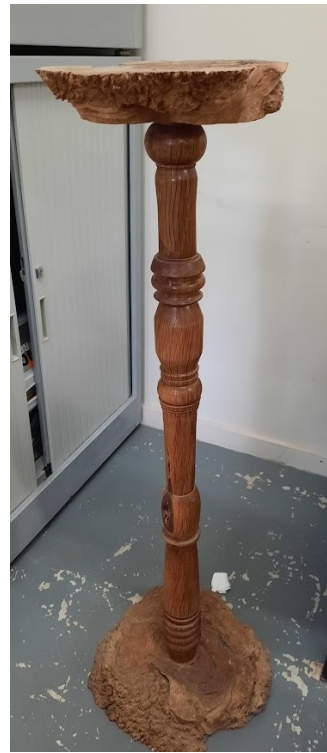


**Below:** The Elm side table with an interesting shape has been made by Lex Van Saane.

**Bottom:** This Doll's House was made by David Carlos and is a replica of a house he lived in in Melbourne. It is made from plywood, hardwood and cedar.



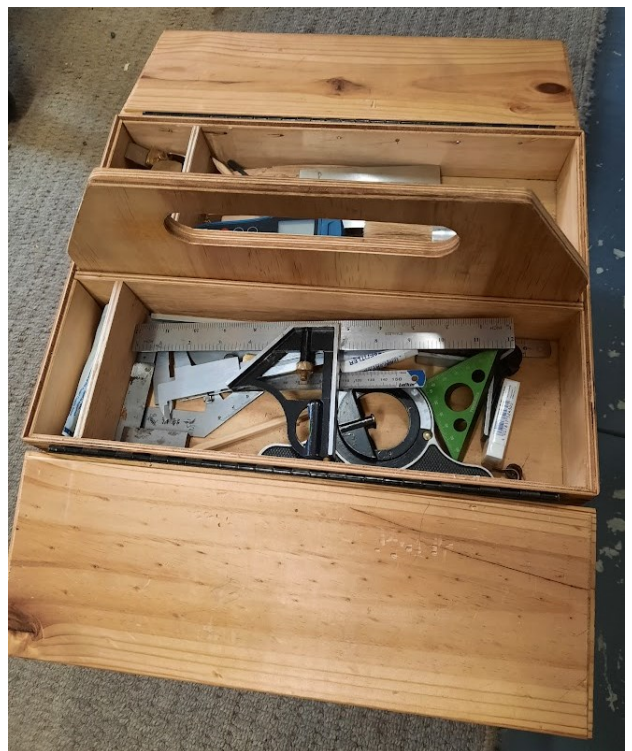
## SHOW & TELL



**Left:** A pedestal made by Steve Edge from Sheoak with burl slices on top and bottom.

**Below:** This natural edge bowl was made by John DiStefano from Redgum. A tricky job with all the flaws as it's only 3mm thick.

**Bottom:** This is Tina Kalivas' toolbox. It was her 2nd ever woodwork project and is beautifully made with Redgum splined joints. It's made to contain everything she needs at the Woodies.





## SHOW & TELL

We had a very special Show and Tell session at this month's Members' Meeting. Members were asked to bring something along that they have made in the past and either like so much or which has special significance and they have decided to keep it. New members were encouraged to show us what they 've made so far or are working on. The range was fantastic ranging from Hartley's first piece of turning to a doll's house, a table, a chess set, pedestal, intricate segmented work, natural edge items, a specialised toolbox, a knitting box and even a lathe turned didgeridoo.

Thanks to all those who participated. It has been suggested that we should have one or two of these specially targeted Show & Tell sessions each year. Something to consider. Ideas would be appreciated.



**Below:** The segmented urn with finial was made using Celery Top Pine and Walnut by Neil Lenne.



## WOODIES @ WORK

**Below:** The Seahorse sculpture was painstakingly carved by Mel Day. It is imbedded in a piece of burl with resin replicating water. Another great piece of work Mel.



### SOME IMPORTANT THINGS TO REMEMBER

- \*\*50% of all doctors graduated in the bottom half of their class.
- \*\*Behind every great man, there's a woman rolling her eyes.
- \*\*Stressed spelt backwards is desserts. Coincidence? I think not.
- \*\*Always borrow money from pessimists. They don't expect it back.



Really, the only funny part is that someone bought him that t-shirt believing it would be needed.



## WOODIES @ WORK

The beautiful big table below was made by Jimmy Yokoi. The top is a slab of Redgum burl about 90cm diameter and 7cm thick. And completed with poly resin. The legs were made from old Redgum fence posts. Jimmy used hand tools where possible to do the work and as usual displays great craftsmanship.

The picture below was taken some time ago as Jimmy was working out how he wanted to create the base, using a solid pine template.



## WOODIES @ WORK



**Left:** By Steve Edge, the original piece was to have been much bigger with open segments but shattered in the very last stage. Each ring of that pictured consists of 24 segments and at its narrowest was only 30mm wide. (Yes, less than 5mm each and very tricky). There are 12 rings. It was finished with Organ oil.

**Below:** The 30cm raised bowl was made by Vic Prior from 2 pieces of Camphor Laurel. It was finished using Aussie Oil. Vic highly recommends Camphor wood to work with, if you can cope with the strong smell.



## CAN YOU WORK THIS ONE OUT?

$$X + Y = 36$$

$$X - Y = 18$$

$$X \div Y = ?$$

*Think it through first, then check your answer on page 11.*



## SHOW & TELL

**Below:** The knife and parting tool were created by David Macdonald from Coastal Banksia.

**Middle:** The elephant scrollsawn jigsaw framed with background, was made by Sandra Pietrolungo from Pine and Merbau.

**Bottom:** A chess set made by Steve Edge. It involved mostly turning, but also some carving. Made from Cypress and Sheoak, it took about 7 weeks to complete.



## SHOW & TELL

**Below:** David Macdonald and Bruce Talbot, a Woodies member who tragically passed away a few years ago, began turning didgeridoos on the lathe. They successfully made about 11 of the indigenous instruments over time. Thankfully David and Caroline Talbot still have a couple each. They involve a lot of skill and time to make, but the ability to play is at another level. Most of us thought that there was only one sort of didgeridoo, the traditional kind. Like the one pictured below left, made from Redgum and finished with Polyurethane. But below right is another option which is rectangular with sound ports top and bottom. David played both instruments for the group at the April Members' Meeting. Everyone was silent and the sound was haunting.



A woman walks into an optician to return a pair of spectacles that she purchased for her husband a week before.

The assistant asks,

"What seems to be the problem, Madam?"

The woman replies,

"I'm returning these spectacles I bought for my husband. He's still not seeing things my way."



**SHOW & TELL**

**Below:** A large Redgum and resin bowl made by David Macdonald.



**SHOW & TELL**



**Above:** A lidded knitting box with tray made from Tas Oak and Walnut by Sandra Pietrolungo.

**Below:** By Alan Hurst, an egg in a captive ring cup, with 3 eggs inside all turned from the same piece of wood. Also, another egg and cup with the top taken off 'ready to eat'.

A 40cm bowl made from yellow box burl with see-through sap lines and voids, also by Alan Hurst.



**Above:** An large Olive bowl by Neil Lenne with a piece of timber collected on the Club's annual trip to Barham and Koondrook.

**Left:** The off-centre turned bird with three captive rings, made as part of a Monday evening challenge by John DiStefano.






## OUR WEIRD LANGUAGE

### Do you think learning English would be easy?

- 1) The bandage was **wound** around the **wound**.
- 2) The farm was used to **produce produce**.
- 3) The dump was so full that it had to **refuse** more **refuse**.
- 4) We must **polish** the **Polish** furniture.
- 5) He could **lead** the race if he would just get the **lead** out.
- 6) The soldier decided to **desert** his **dessert** in the **desert**.
- 7) Since there is no time like the **present**, he thought it was time to **present** the **present**.
- 8) A **bass** fish was painted on the head of the **bass** drum.
- 9) When shot at, the **dove dove** into the bushes.
- 10) I did not **object** to the **object** in question.
- 11) The insurance was **invalid** for the **invalid**.
- 12) There was a **row** among the oarsmen about how to **row**.
- 13) They were too **close** to the door to **close** it.
- 14) The buck **does** funny things when the **does** are nearby.
- 15) A seamstress and a **sewer** fell down into a **sewer** line.
- 16) To help with planting, the farmer taught his **sow** to **sow**.
- 17) The **wind** was light, so they had to **wind** the sail up.
- 18) Upon seeing the **tear** in the painting I shed a **tear**.
- 19) I had to **subject** the **subject** to a test on the same **subject** as the others.
- 20) How can I **intimate** this to my most **intimate** friend?

**Let's face it - English is a crazy language.** There is no egg in eggplant, nor ham in hamburger; neither apple nor pine in pineapple. English muffins weren't invented in England or French fries in France. Sweetmeats are candies while sweetbreads, which aren't sweet at all, are animal organs. We take English for granted. But if we explore its paradoxes, we find that quicksand can work slowly, boxing rings are square and a guinea pig is neither from Guinea, nor is it a pig.





**BERWICK DISTRICT  
WOODWORKERS CLUB Inc.**  
Inc No. A0012122U

**For a Great Woodcraft Exhibition  
Visit our Workshop & Clubrooms  
FREE Entry for All**

Children under 16 to be accompanied by an adult

**Woodworking Demonstrations, including:**  
Wood Turning / Band Sawing / Scroll Sawing / Dreme  
Toy Making / Routing / Pyrography / Wood Carving

**Berwick District Woodworkers Club Inc.**  
**Annual Expo: 12 - 14 July 2024**

Following the outstanding success of last year's Expo, the Berwick District Woodworkers Club Inc. will again hold an exhibition of members' work on the weekend of 12th July (5pm – 8pm), and 13th and 14th July 2024 (9am – 5pm) Entry is free.

Held in the Club's clubrooms and workshop in the grounds of The Old Cheese Factory, 34 Homestead Rd., Berwick, this year's Expo will display a broad range of members' woodwork, some of which will be for sale. We will also have a dedicated Sales area, where members will be offering non-exhibition pieces for sale as well as a selection of timbers. A number of live demonstrations will run during the Expo, including wood turning, rocking horse making, band saw, scrollsaw, toy making, carving, and pyrography. A chain saw sculptor will be in action outside the clubrooms, and there will also be a kid's corner, a raffle with great prizes, and drinks available.

We will also be conducting our popular monthly Farmer's Market on the Saturday morning till 1pm, so it promises to be another great weekend, and we would love to see you there. For further information and queries, contact John McMahon on 0437096840 or our club secretary at [bdwwcsec@outlook.com](mailto:bdwwcsec@outlook.com)

## JOKES OF THE MONTH

An elderly couple walked by me holding hands and as they did, I told the gentleman to have her home by 10, with a smile and a wink ....

The elderly man stopped in his tracks and without missing a beat said, with a returned smile and wink - "Don't worry, I will. Her husband comes home at 11."

The teacher asks, "Who can tell me the chemical formula for water?"

Little Johnny pipes up, "HIJKLMNO"!

The teacher is puzzled, "What on Earth are you talking about, Johnny?" Little Johnny looks hurt,

"But sir, you yourself said yesterday that it's H to O!"



# SHOW & TELL

**Below:** This large box with drawers, inserts, trays and a lovely curved lid was made Lex Van Saane. The unknown hardwood timber is likely Eucalypt.

**Middle:** This lidded container was made from fruitwood by Malcolm Phillips.

**Bottom:** The 'banana bowl' was turned from green Sheoak by Michael Bladen. The stitching to disguise a crack emanating from the heartwood of the branch was very nicely done.



At our April Members' Meeting, we had a Demo by Josh Crank (Assistant Manager at Total Tools Wonthaggi) and Simon from MaxiSafe. Everyone enjoyed the focus on safety and being able to try on the variety of options for face and dust protection.

**Bottom:** **Who am I??** I'm either trying out a Maxisafe Full Face Mask or I'm preparing for the next space mission. Badge concealed for 'privacy' reasons!





Thanks to the group of members below (Frank Paravicini, Lex Van Saane, Frank Kisvarda, David Carlos, Lionel Wood and Neil Lenne) who braved a pretty cold day to sand back and prepare our shipping container. It was then undercoated ready for the full paint job. Frank and Neil also cut out 10 holes and installed vents to ensure airflow through the unit. The inside was partially prepared for racks, shelving and other storage requirements.



**Below:** This exquisite chess set was created by Lionel Wood using only the scrollsaw for the pieces and other tools for the board. Made from Huon Pine and Oregon, it was a long and demanding project and the lucky recipient is a family member.





## LINKS & WEBSITES TO EXPLORE

### Focus on pen turning:

There's a few ads in this first link, but some fantastic pens to check out -

<https://www.penturners.org/threads/no-comments-just-post-new-segmented-pens-and-likes.111419/page-9>

Dovetail pen turning -

<https://www.lumberjocks.com/threads/dovetail-pen-turning.325797>

Tiger tail pen blanks -

<https://www.instructables.com/Tiger-Tail-Pen/>

Impossible spiral pen blanks -

<https://www.instructables.com/Impossible-Spiral-Pen-Blanks/>

### AND HERE'S SOME UNIQUE WAYS TO DISPLAY YOUR PENS -



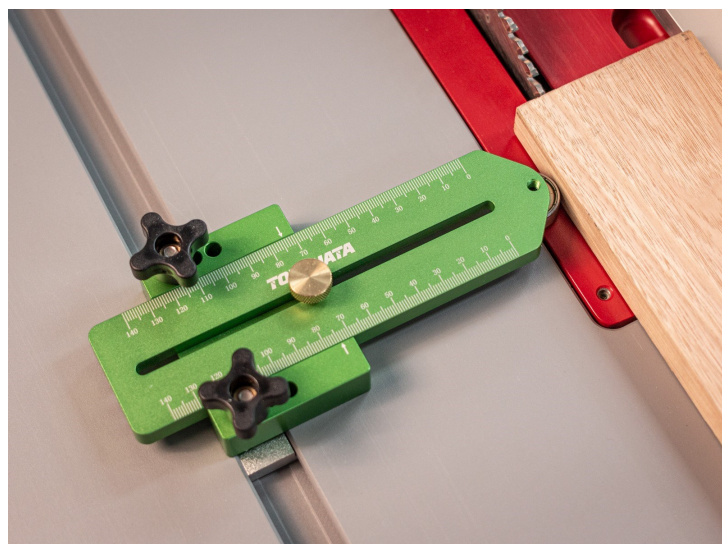
## PRECISION JIG THANKS TO GENEROUS MEMBER SUPPORT

New member David Carlos came to his first Members' Meeting and enjoyed the camaraderie, the sausage sizzle lunch, and the extensive Show & Tell. He then won a \$50 voucher from Timbecon in the raffle.

Given recent events David offered to purchase a thin rip jig for the Club using the voucher. Supervisors agreed it would be a valuable addition for table saw precision and safety.

Malcolm Phillips donated the voucher for the raffle in the first place. Thanks to both Malcom and David for your generous support of the Club.

<https://www.timbecon.com.au/torquata-thin-ripping-jig>



## WHAT TOOL IS THIS?

### Last Month's Mystery Tool -

This is a saw swage, "used to flare large bandsaw or circular saw teeth, which increases the width of the cut, called the kerf."

This one is a No. 6 American Shaper.



### This Month's Mystery Tool -

**CLUE** - No, it's not a blood pressure tester without a sleeve. It's actually a very useful woodworking accessory, particularly for builders and house fitters.

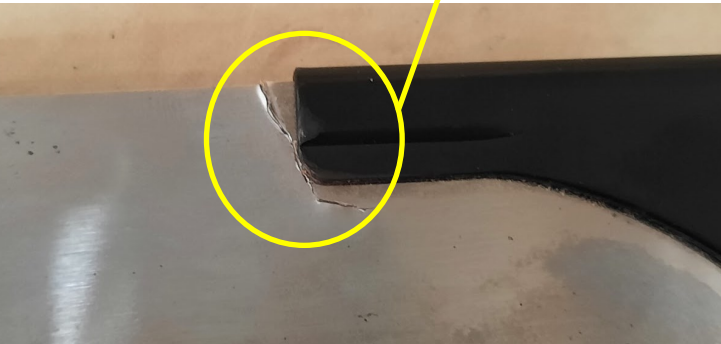




## USE THINGS PROPERLY PLEASE

**JAPANESE SAWS** - The Japanese saw or nokogiri (鋸) is a type of saw used in woodworking and Japanese carpentry that cuts on the pull stroke, unlike most European saws that cut on the push stroke. We have 3 of these precision tools at the Woodies.

Unfortunately two have been damaged irreparably (see pics below). REMEMBER - Japanese saws cut on the pull stroke, NOT THE PUSH. To cause this damage, someone has *forced the saw* to cut on the push against the teeth. As you can see in the pictures below, the blades have been creased along the cutting edge and severely cracked at the handle. These two saws are about \$50 each and will need to be replaced. PLEASE TAKE CARE .... OR ASK FOR ADVICE.



**ANSWER TO PUZZLE ON PAGE 5 ...**

$$27+9=36 \quad 27-9=18 \quad 27\div 9= \mathbf{3}$$

### \*\*\*URGENT REQUEST\*\*\*

Please send any relevant articles, photos of interest or your latest project, items to buy or sell, woodworking tips, tricks and jigs, or just any general suggestions for the Newsletter to -

**[woodiesnews@gmail.com](mailto:woodiesnews@gmail.com)**

## BIRTHDAYS FOR APRIL

# Happy Birthday

**A very happy birthday to the following Members –**

**Fred Demenech**

**Eric Hornsby**

**Tina Kalivas**

**Peter Morgan**

**Mal Paul**

**Malcolm Phillips**

**There are still a few birthdays not on our records. If we've missed you, please let Alan Hurst know or email - [woodiesnews@gmail.com](mailto:woodiesnews@gmail.com)**

## NEW MEMBERS

**Welcome to new members -**

**Beate Schroder**

**Linda Lorenzen**

**Current members, please introduce yourselves and make all our newer members welcome at the Woodies.**

## SAVINGS ON EXPENDABLES

**NEW STOCK HAS NOW ARRIVED IN BULK, SO PRICES ARE MINIMISED:** Shellawax, Glow, EEE, super glue and sandpaper. All items are on-sold at cost price. We also have earmuffs, safety glasses and Covid-safe masks if you'd like to wear one. If you are interested in purchasing any of these items, see your session supervisor for prices and availability. *If you have any thoughts about other items the Club could purchase in bulk for resale, speak to a Supervisor or to purchasing officer - Neil Bateman.*

*You can't buy happiness, but you can buy tools and wood and it's sort of the same thing.*

## CONTRIBUTIONS TO NEWSLETTER SEGMENTS?

If you have any funny stories, articles, *Tips, Tricks & Jigs*, favourite gadgets, items to sell or buy, interesting websites, pictures of things you've created or work in progress, send them to - [woodiesnews@gmail.com](mailto:woodiesnews@gmail.com)  
**Articles must be received no later than the 16<sup>th</sup> of the month please**, to be included in the next Newsletter.

## WOODIES CLASSIFIEDS

There are two categories; 'For Sale' if you have any tools or equipment you want to liquidate, and "Wanted" for those of you who are looking for preloved tools or equipment that other members may be willing to part with. There is no cost.

All you need to do to get an advert in, is write a short description (including contact details) of the item that you are selling, or wish to buy and send it to [woodiesnews@gmail.com](mailto:woodiesnews@gmail.com) along with any photographs where appropriate.

**Entries must be received by 16th of the month to be included in the next newsletter. Items will appear in two consecutive newsletters unless sold or otherwise requested.**

## THANKS TO WONTHAGGI WOODIES' SPONSORS

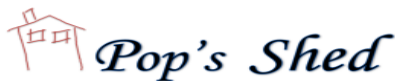
\*\*\*\*\* *They support us, please support them* \*\*\*\*\*



Cnr. White Road & McKenzie St, Wonthaggi  
**Ph: 5671 4000**



33 -35 Murray Street, Wonthaggi  
 (directly opposite Woolworths Supermarket)  
 & 2460 Bass Hwy, Bass (in the Service Centre)



10b/286-288 Maroondah Hwy,  
 Chirside Park  
**Ph: 9727 0611**



**Address** 2/5-7 Korumburra Road  
 Wonthaggi, Wonthaggi, VIC  
 3995  
**Phone** (03) 5672 5522



80-82 Osborne  
 Ave Springvale Victoria 3171  
**(03) 8549 9999**



72-90 Bilson Street  
 Wonthaggi, 3995, Victoria Australia  
**Phone: 03 5632 3920**



U6/3b Newlands Road  
 Reservoir, VIC 3073  
**Phone: 03 9448 8300**



Unit 2, 10-14 Capital Drive, Grovedale  
**Ph: 03 5243 0522**



*THE WONTHAGGI WOODY* is the monthly  
 newsletter of Wonthaggi Woodcrafters Inc.

**NEWSLETTER EDITOR - Alan Hurst**

[woodiesnews@gmail.com](mailto:woodiesnews@gmail.com)